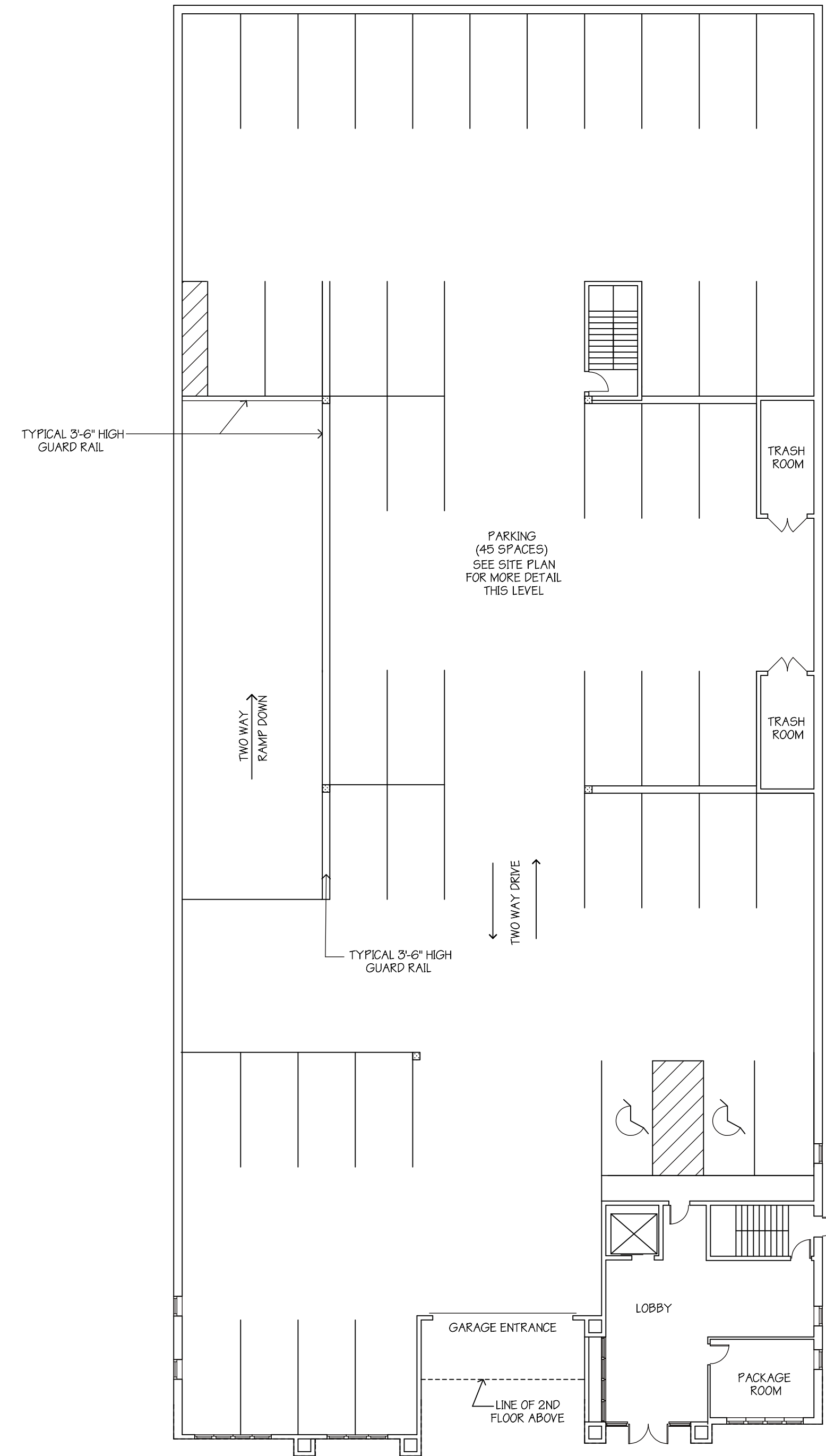


NOTES:

- 1. SEE FRONT ELEVATION FOR EXTENT OF TRANSPARENCY REQUIRED BY SECTION 6.7.7 OF THE CALDWELL REDEVELOPMENT PLAN
- 2. SEE 4TH FLOOR PLAN AND RIGHT SIDE ELEVATION FOR DIMENSIONING OF 4TH FL. STEPPACK REQUIRED BY SECTION 6.12 OF THE CALDWELL REDEVELOPMENT PLAN

LOWER LEVEL PLAN

SCALE: 1/16" = 1'-0"



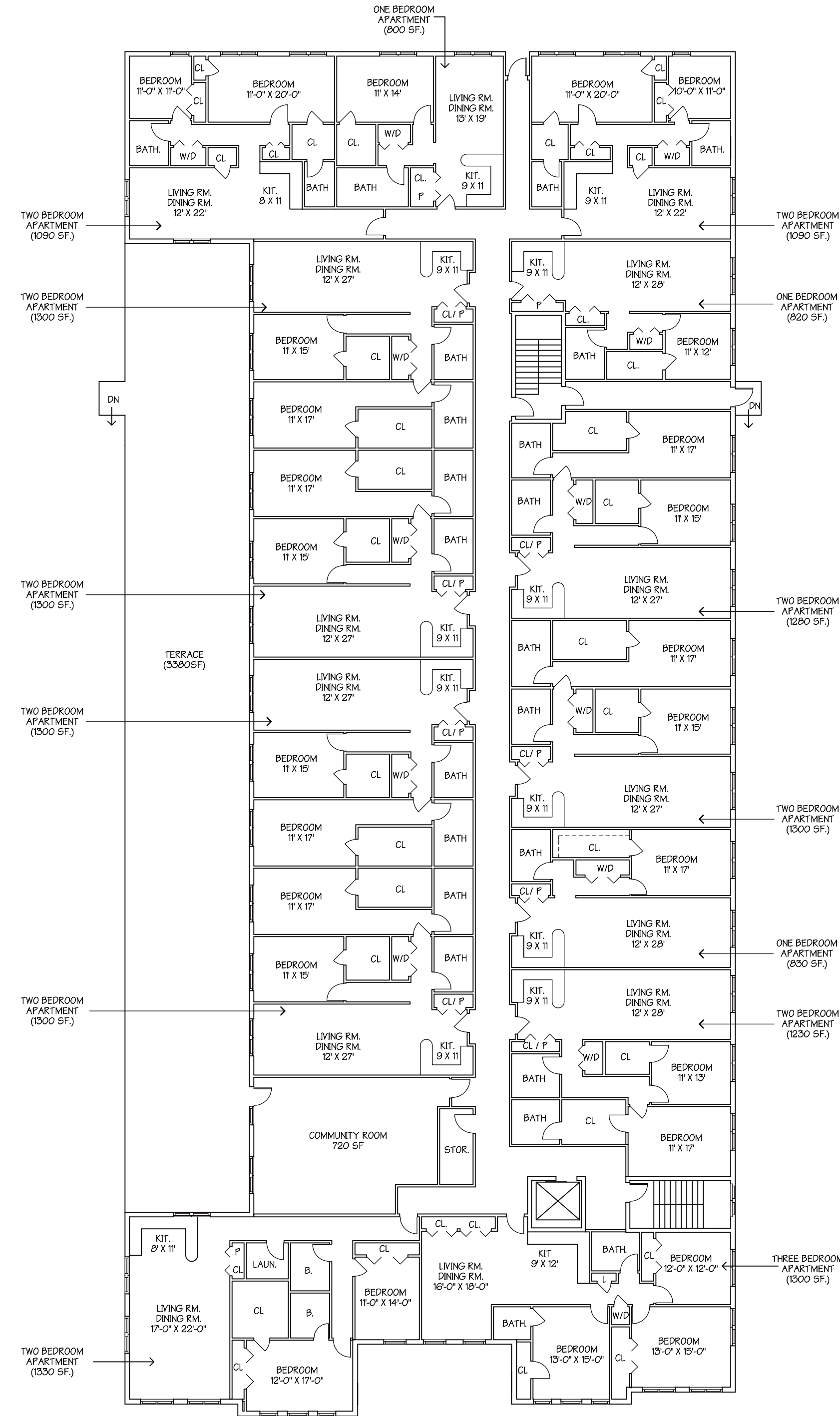
NOTES:

- 1. SEE FRONT ELEVATION FOR EXTENT OF TRANSPARENCY REQUIRED BY SECTION 6.7.7 OF THE CALDWELL REDEVELOPMENT PLAN
- 2. SEE 4TH FLOOR PLAN AND RIGHT SIDE ELEVATION FOR DIMENSIONING OF 4TH FL. STEPPACK REQUIRED BY SECTION 6.12 OF THE CALDWELL REDEVELOPMENT PLAN

GROUND FLOOR PLAN

SCALE: 1/16" = 1'-0"

REVISED 2/17/23



NOTES:

1. SEE FRONT ELEVATION FOR EXTENT OF TRANSPARENCY REQUIRED BY SECTION 6.7.7 OF THE CALDWELL REDEVELOPMENT PLAN
2. SEE 4TH FLOOR PLAN AND RIGHT SIDE ELEVATION FOR DIMENSIONING OF 4TH FL. STEPBACK REQUIRED BY SECTION 6.2 OF THE CALDWELL REDEVELOPMENT PLAN

MATERIALS:

THE EXTERIOR WILL HAVE MEDIUM BROWN BRICK WITH OFF WHITE STUCCO LINTELS, SILLS AND HEADERS, LIGHT TO MEDIUM BROWN STUCCO DRIVERS, CLEAR GLASS AND TAN ALUMINUM WINDOWS, CLEAR GLASS AND TAN ALUMINUM ENTRY DOORS, CLEAR GLASS AND TAN OVERHEAD VEHICULAR DOOR, OFF WHITE ALUMINUM FASCIA, SORITTS, LEADERS, AND GUTTERS, AND MEDIUM BROWN DIMENSIONAL FIBERGLASS SHINGLE ROOF.
 THE INTERIOR WILL HAVE NATURAL HARDWOOD AND TILE FLOORS, PAINTED WALLS, NATURAL WOOD CABINETS, STAINLESS STEEL APPLANCES AND KITCHEN FIXTURES, BLACK GRANITE COUNTER TOPS, AND OFF WHITE BATHROOM FIXTURES.

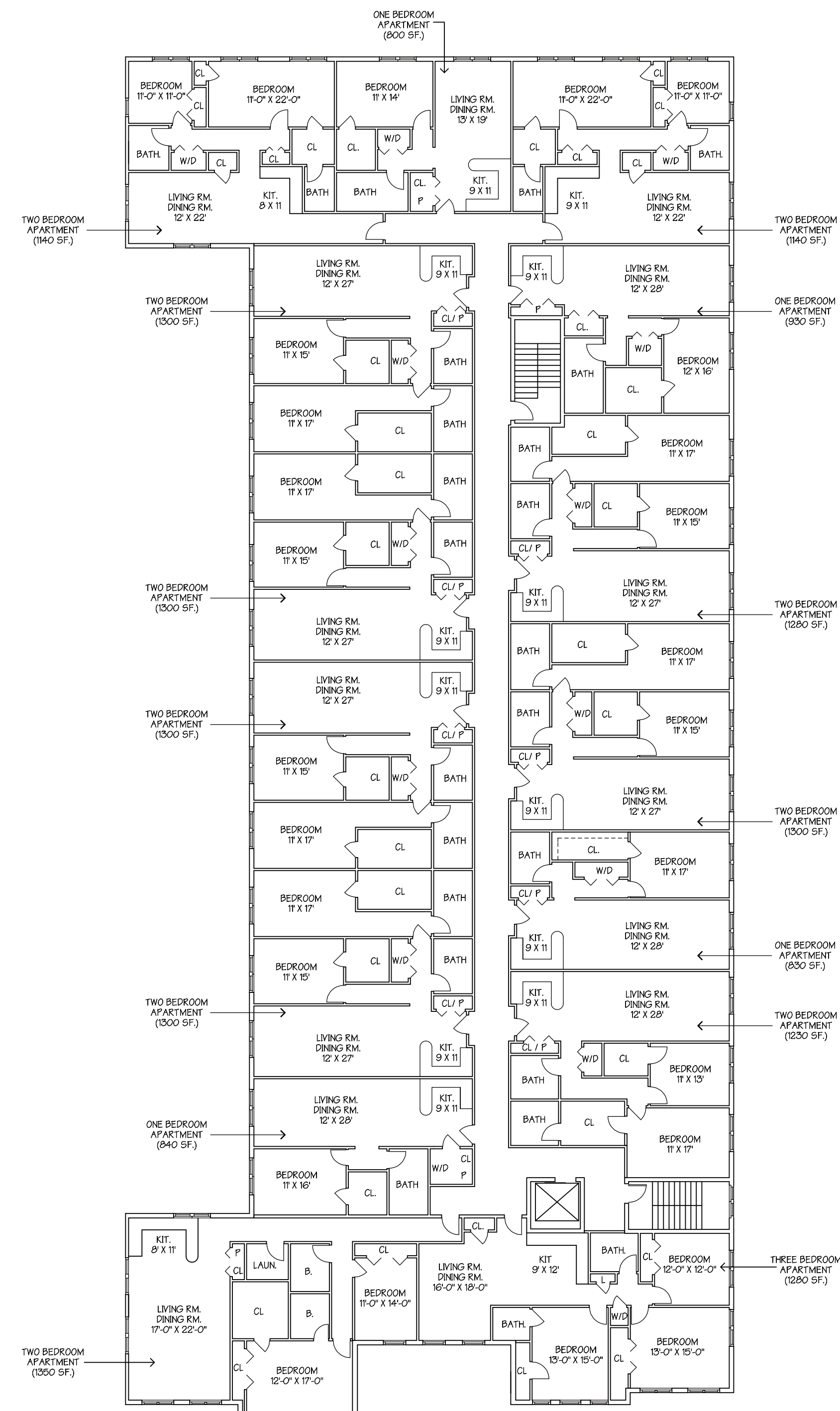
SECOND FLOOR PLAN

SCALE: 1/16" = 1'-0"

APARTMENT UNIT COUNT

LOCATION	1 BR APTS.	2 BR APTS.	3 BR APTS.	TOTAL/FLOOR
2ND FLOOR	3	10	1	14
3RD FLOOR	4	10	1	15
4TH FLOOR	6	9		15
TOTAL	13	29	2	44

NINE AFFORDABLE UNITS CONSISTING OF 1 - ONE BEDROOM UNIT, 2 - THREE BEDROOM UNITS, AND 6 - TWO BEDROOM UNITS WILL BE INTEGRATED IN ACCORDANCE WITH THE AFFORDABLE HOUSING REGULATION IN EFFECT AT THE TIME



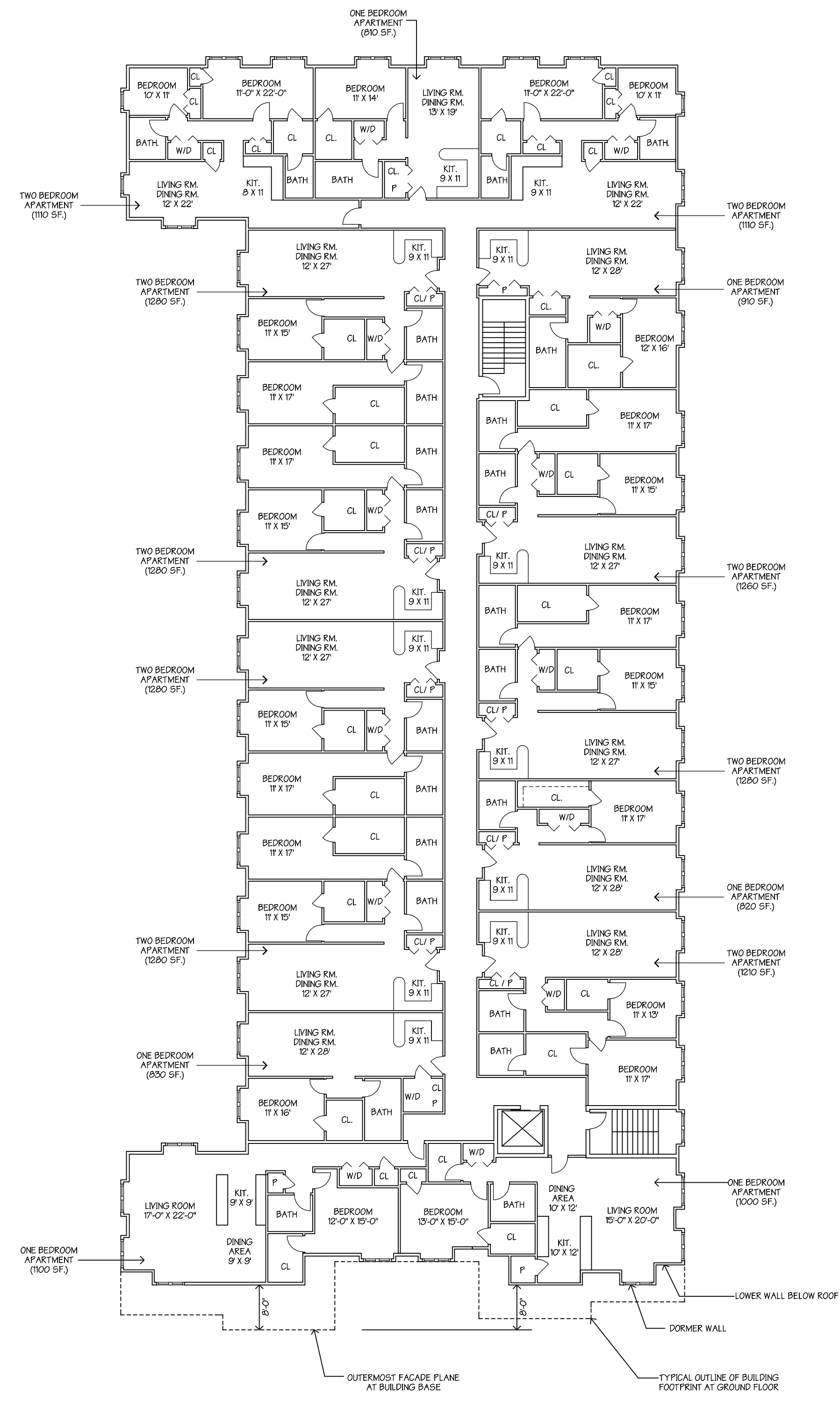
NOTES:

1. SEE FRONT ELEVATION FOR EXTENT OF TRANSPARENCY REQUIRED BY SECTION 6.7.7 OF THE CALDWELL REDEVELOPMENT PLAN
2. SEE 4TH FLOOR PLAN AND RIGHT SIDE ELEVATION FOR DIMENSIONING OF 4TH FL. STEPBACK REQUIRED BY SECTION 6.2 OF THE CALDWELL REDEVELOPMENT PLAN

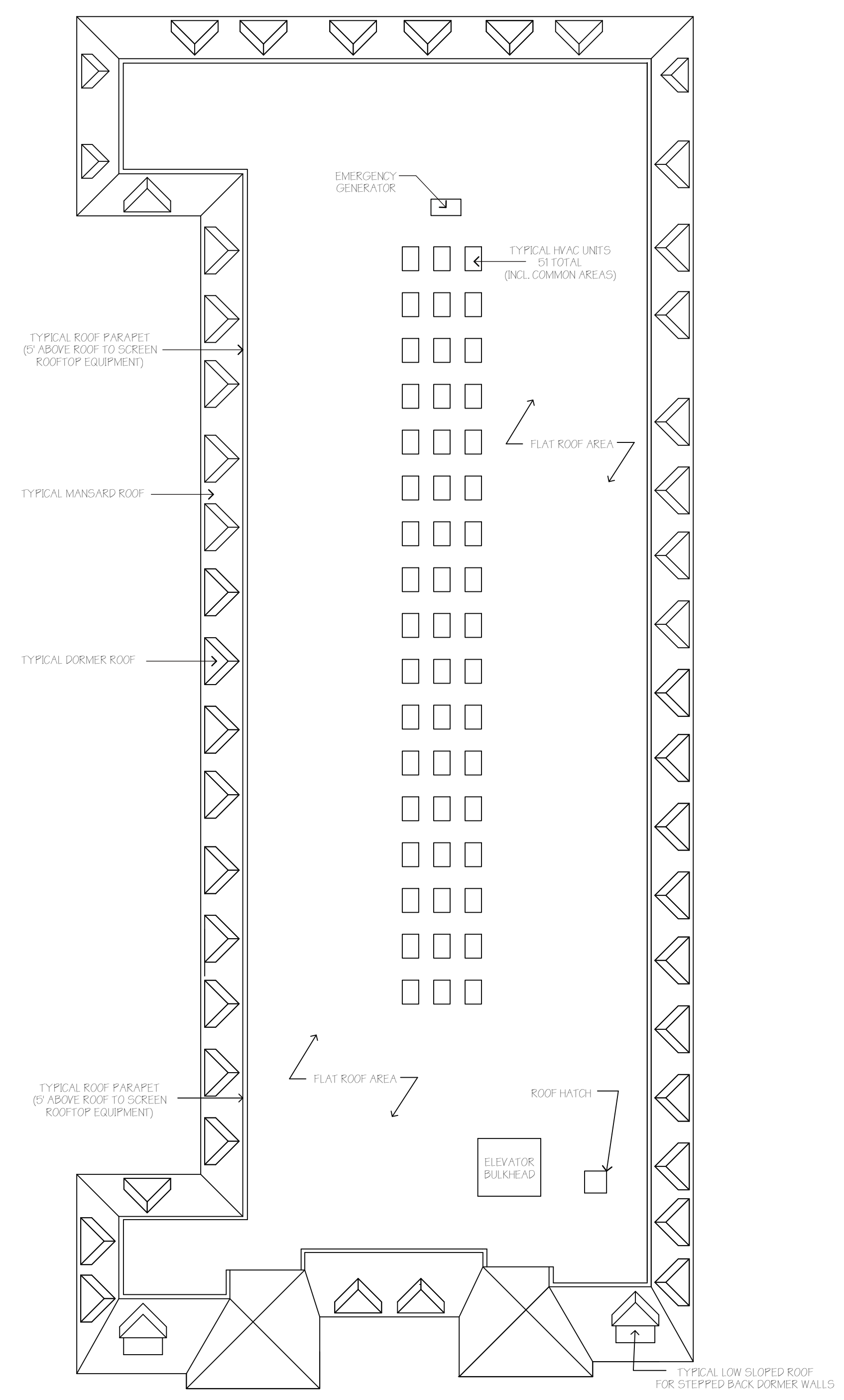
THIRD FLOOR PLAN

SCALE: 1/16" = 1'-0"

REVISED 2/17/23



FOURTH FLOOR PLAN
 SCALE: 1/16" = 1'-0"



ROOF PLAN
 SCALE: 1/16" = 1'-0"

REVISED 2/17/23



RIGHT SIDE ELEVATION

SCALE: 1" = 10'-0"



LEFT SIDE ELEVATION

SCALE: 1" = 10'-0"

TRANSPARENCY CALCULATIONS:

FOURTH FLOOR WINDOW TRANSPARENCY CALCULATION
 (8 WINDOWS @ 7.69 SF = 61.2 SF WINDOW DIVIDED BY 28' X 5.14' = 144 SF WALL OR 42.5%)

THIRD FLOOR WINDOW TRANSPARENCY CALCULATION
 (8 WINDOWS @ 12.89 SF, 4 WINDOWS @ 12.83 SF, 3 WINDOWS @ 14.55 SF, AND 2 WINDOWS @ 15.53 SF = 229.15 SF WINDOW DIVIDED BY 101.83X107=1018.3 SF WALL OR 22.5%)

SECOND FLOOR WINDOW TRANSPARENCY CALCULATION
 (8 WINDOWS @ 13.75 SF, 5 WINDOWS @ 15.53 SF, AND 4 WINDOWS @ 12.83 SF = 238.97 SF WINDOW DIVIDED BY 101.83X107=1018.3 SF WALL OR 23.5%)

FIRST FLOOR WINDOW AND DOOR TRANSPARENCY CALCULATION
 (10 WINDOWS @ 15.53 SF, 1 WINDOW @ 17.3 SF, STOREFRONT @ 102 NET SF, AND OVERHEAD DOOR @ 223 NET SF = 497.6 SF DIVIDED BY 101.83X118=11932.94 SF WALL OR 27.15%)



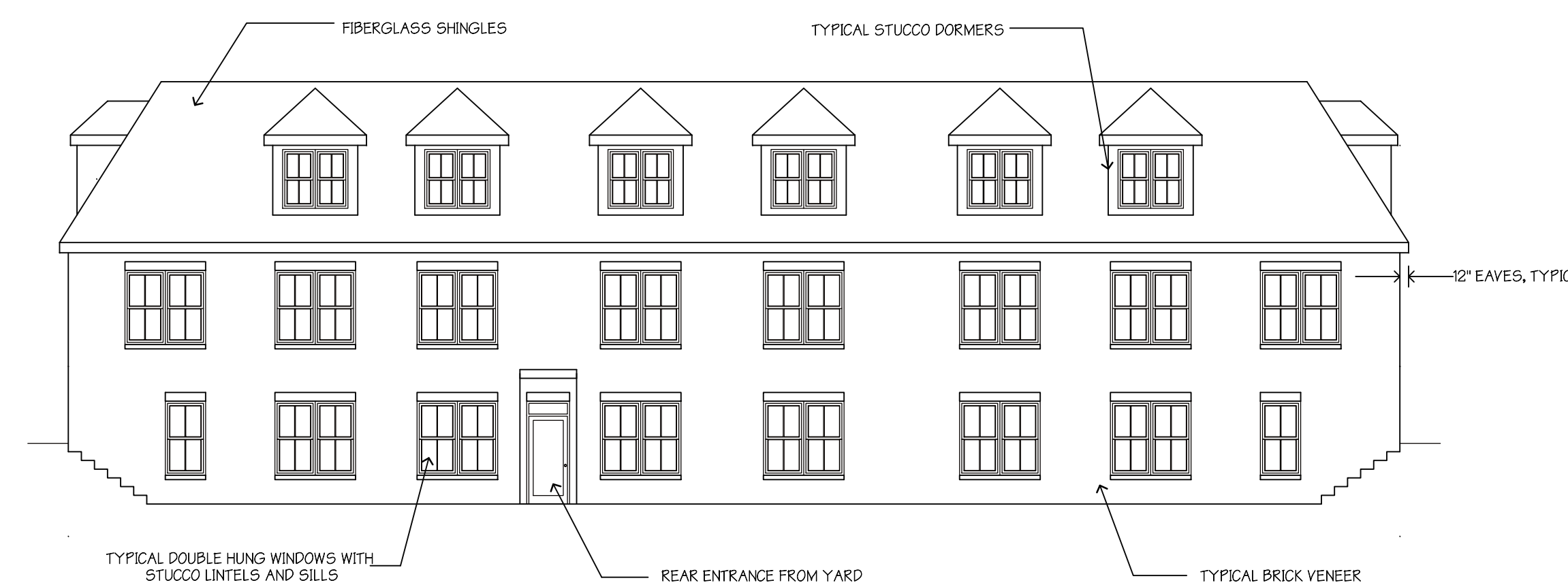
MATERIALS:

THE EXTERIOR WILL HAVE MEDIUM BROWN BRICK WITH OFF WHITE STUCCO LINTELS, SILLS AND HEADERS, LIGHT TO MEDIUM BROWN STUCCO DORMERS, CLEAR GLASS AND TAN ALUMINUM WINDOWS, CLEAR GLASS AND TAN ALUMINUM ENTRY DOORS, CLEAR GLASS AND TAN OVERHEAD VEHICULAR DOOR, OFF WHITE ALUMINUM FASCIA, SOFFITS, LEADERS, AND GUTTERS, AND MEDIUM BROWN DIMENSIONAL FIBERGLASS SHINGLE ROOF.

THE INTERIOR WILL HAVE NATURAL HARDWOOD AND TILE FLOORS, PAINTED WALLS, NATURAL WOOD CABINETS, STAINLESS STEEL APPLIANCES AND KITCHEN FIXTURES, BLACK GRANITE COUNTER TOPS, AND OFF WHITE BATHROOM FIXTURES.

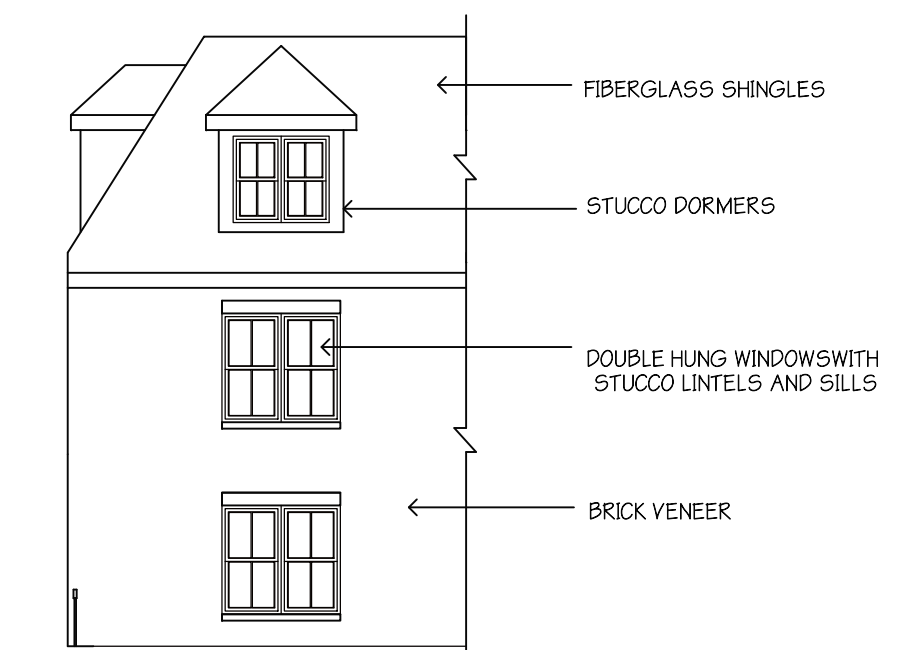
FRONT ELEVATION

SCALE: 1" = 10'-0"



REAR ELEVATION

SCALE: 1" = 10'-0"



REAR TERRACE ELEVATION (FRONT SIMILAR)

SCALE: 1" = 10'-0"

REVISED 2/17/23





