



RIGHT SIDE ELEVATION

SCALE: 1" = 10'-0"



LEFT SIDE ELEVATION

SCALE: 1" = 10'-0"



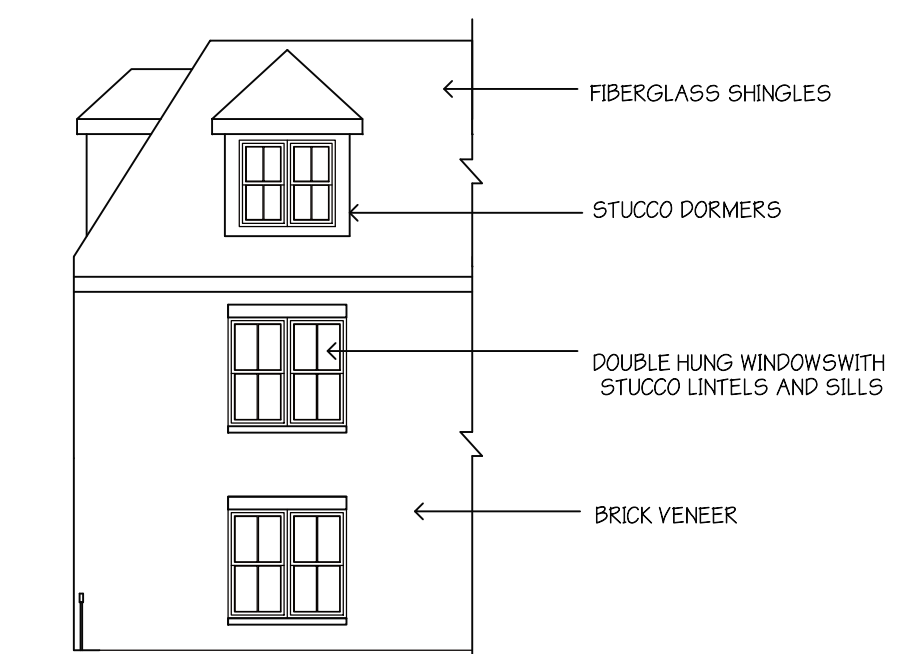
FRONT ELEVATION

SCALE: 1" = 10'-0"



REAR ELEVATION

SCALE: 1" = 10'-0"



REAR TERRACE ELEVATION (FRONT SIMILAR)

SCALE: 1" = 10'-0"