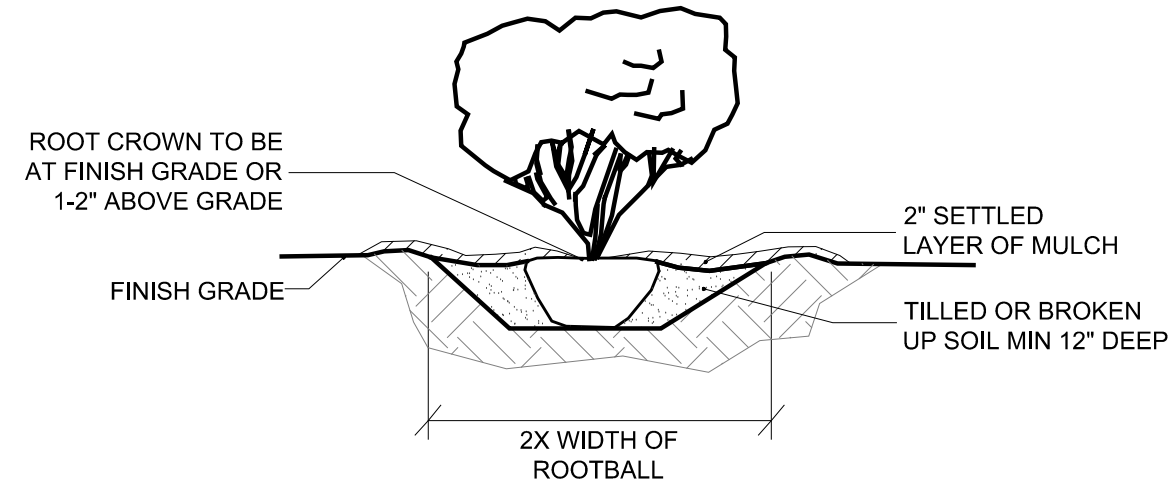


NOTES: TYPICAL SHRUB PLANTING, INDIVIDUAL PLANTING HOLE

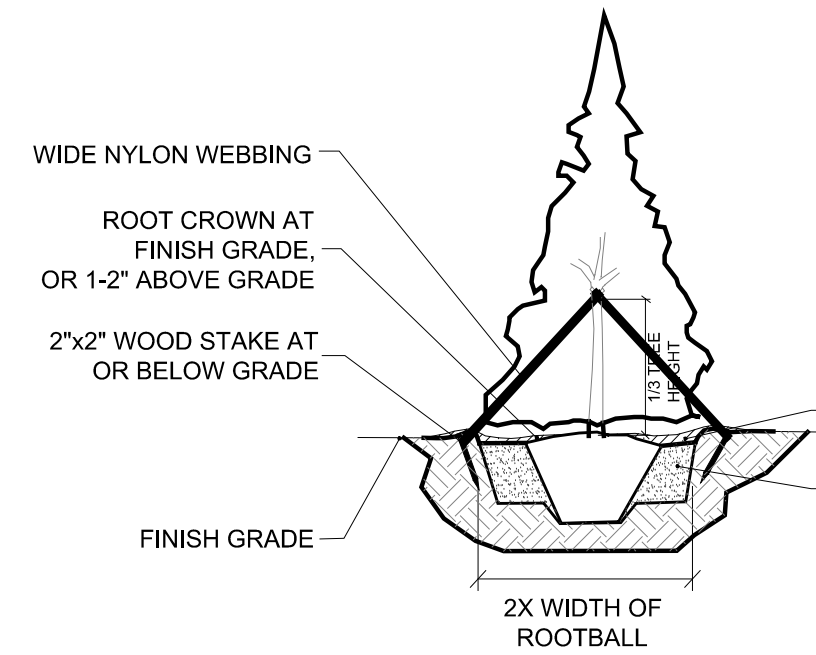
1. DIG PLANTING HOLE AT LEAST 2X THE WIDTH OF THE ROOT BALL OR CONTAINER.
2. SCARIFY SUBGRADE AND SIDES OF PLANTING HOLE WHEN PLANTING IN CLAY SOIL.
3. SET THE TOP OF THE ROOT BALL LEVEL WITH THE SOIL SURFACE, OR 1-2" ABOVE IF THE SOIL IS PRONE TO SETTLING.
4. IF CONTAINER GROWN PLANT, GENTLY SLIDE PLANT OUT OF CONTAINER, DISTURB THE ROOTS.
5. IF B&B PLANT, REMOVE BURLAP FROM AT LEAST THE TOP 12 INCHES OF THE ROOTBALL WITHOUT DISTURBING THE ROOTBALL. REMOVE ALL CORD FROM THE TRUNK. REMOVE BURLAP AND WIRE BASKET (IF PRESENT) FROM THE ROOT BALL.
6. BACK FILL THE PLANTING HOLE WITH EXCAVATED NATIVE SOIL, BROKEN UP OR TILLED. WATER TO REMOVE AIR POCKETS.
7. PLACE BARK MULCH ON THE SURFACE TO A (SETTLED) DEPTH OF 1 TO 3 INCHES.



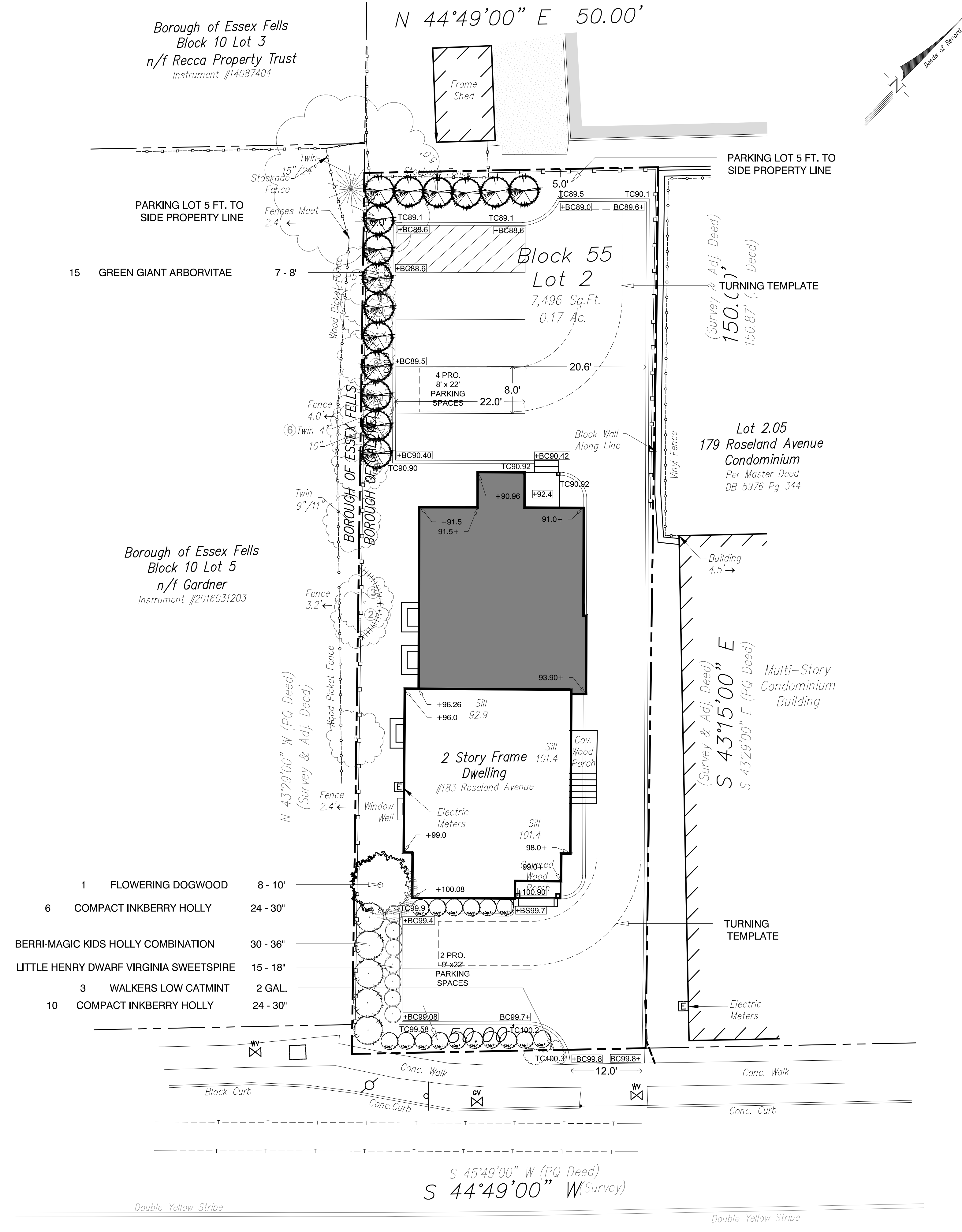
TYP. SHRUB PLANTING: INDIVIDUAL PLANTING HOLE NOT TO SCALE

NOTES: EVERGREEN TREE PLANTING

1. ALL PLANT MATERIALS SHALL BE IN ACCORDANCE WITH THE AMERICAN STANDARDS FOR NURSERY STOCK (ANSI Z60.1-2014). PLANT ACCORDING TO ANSI A300 PART 6.
2. DIG THE PLANTING HOLE A MINIMUM OF 2x WIDTH OF ROOTBALL FOR AT LEAST THE FIRST 12 INCHES OF DEPTH. BELOW 12 INCHES, DIG HOLE WIDE ENOUGH TO PERMIT ADJUSTING. DO NOT DIG THE HOLE DEEPER THAN ROOT BALL DEPTH.
3. SCARIFY THE SUBGRADE AND SIDES OF THE PLANTING HOLE WHEN PLANTING IN CLAY SOILS (MORE THAN 15% CLAY).
4. LIFT AND SET THE TREE BY ROOT BALL ONLY. DO NOT LIFT USING THE TREE TRUNK. DO NOT USE TREE TRUNK AS A LEVER.
5. SET THE TOP OF THE ROOT BALL LEVEL WITH THE SOIL SURFACE OR SLIGHTLY HIGHER IF THE SOIL IS PRONE TO SETTLING.
6. AFTER THE TREE IS SET IN PLACE, REMOVE BURLAP, WIRE AND STRAPS FROM AT LEAST THE UPPER 1/3 OF THE ROOTBALL.
7. BACKFILL WITH EXISTING SOIL THAT HAS BEEN WELL-TILLED OR BROKEN UP. AMEND THE SURFACE WITH MULCH.
8. USE THREE 2" X 2" WOOD STAKES DRIVEN INTO UNDISTURBED SOIL A MINIMUM OF 16 INCHES. SPACE STAKES EQUALLY AROUND THE TREE.
9. ATTACH 3/4" NYLON WEBBING TO CONNECT THE TREE TO STAKES. ATTACH WEBBING AT 1/3 THE TREE HEIGHT.
10. APPLY A 2-3" (SETTLED) DEPTH OF PINE STRAW OR BARK MULCH TO THE PLANTING SURFACE. LEAVE A 2" SPACE AROUND THE TRUNK FOR AIR CIRCULATION.
11. PRUNING SHALL BE LIMITED TO DEAD, DISEASED, OR BROKEN LIMBS ONLY AND SHALL BE IN ACCORDANCE WITH ANSI A300 SPECIFICATIONS.
12. REMOVE ANY TRUNK WRAP REMAINING AT TIME OF PLANTING. NO WRAPS SHALL BE PLACED ON TRUNK.



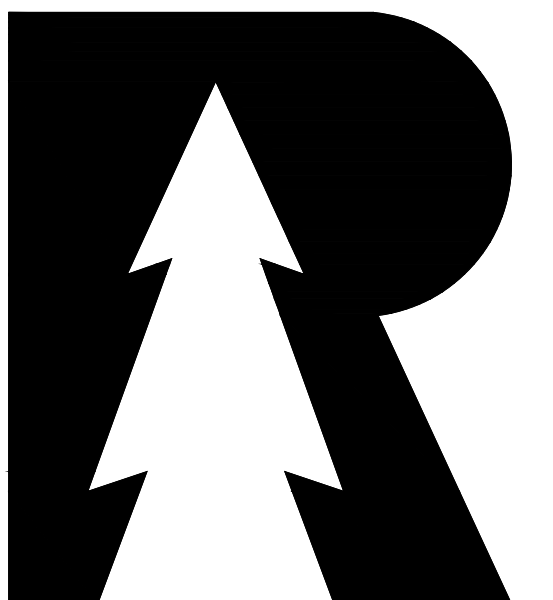
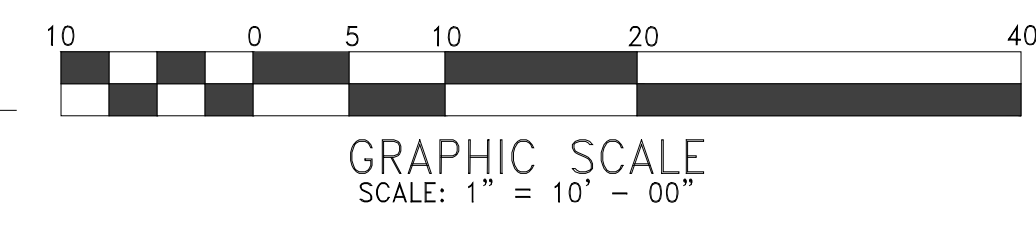
EVERGREEN TREE PLANTING NOT TO SCALE



- 1 FLOWERING DOGWOOD 8 - 10'
- 6 COMPACT INKBERRY HOLLY 24 - 30'
- 5 BERRI-MAGIC KIDS HOLLY COMBINATION 30 - 36'
- 7 LITTLE HENRY DWARF VIRGINIA SWEETSPIRE 15 - 18'
- 3 WALKERS LOW CATMINT 2 GAL.
- 10 COMPACT INKBERRY HOLLY 24 - 30'

PLANTING PLAN

SCALE: 1" = 10' - 00"



RDH Design Group

Landscape Architecture
Architecture
Project Management & Engineering

14 Blackwell Avenue
Morris Township, NJ 07960
Phone: 973-715-0303
Fax: 973-490-7044
www.rdhdesigngroup.com
rdhdesigngroup@optonline.net

ISSUE

NO.	DATE	DESCRIPTION	INT.
1	7/28/22	ORIGINAL DOCUMENT	JP

REVISION

NO.	DATE	DESCRIPTION	INT.
1	6/29/23	REVISED PER REVIEW COMMENT	JP
2	8/30/23	REVISED PER ARCH REVIEW	JP
3	1/22/24	REVISED PER 12-5-23 LETTER	JP
4	3/10/24	PER 3RD COMPLETENESS REVIEW 1ST PLANNING REVIEW. 2-27-24 POLICE REVIEW & 2-27-24 ENVIRONMENTAL COMMISSION REVIEW	JP

BLOCK 55 LOT 2
PRIVATE
RESIDENCE

#183 ROSELAND AVENUE
BOROUGH OF CALDWELL
ESSEX COUNTY
NEW JERSEY

Project Number:	Scale: 1" = 10' - 00"
Drawn By: RH	Approved By: RH

PLANTING PLAN

Drawing Number:	PI.0
Author:	BRIAN M. HOARLE N.J. PE LIC. # 43521