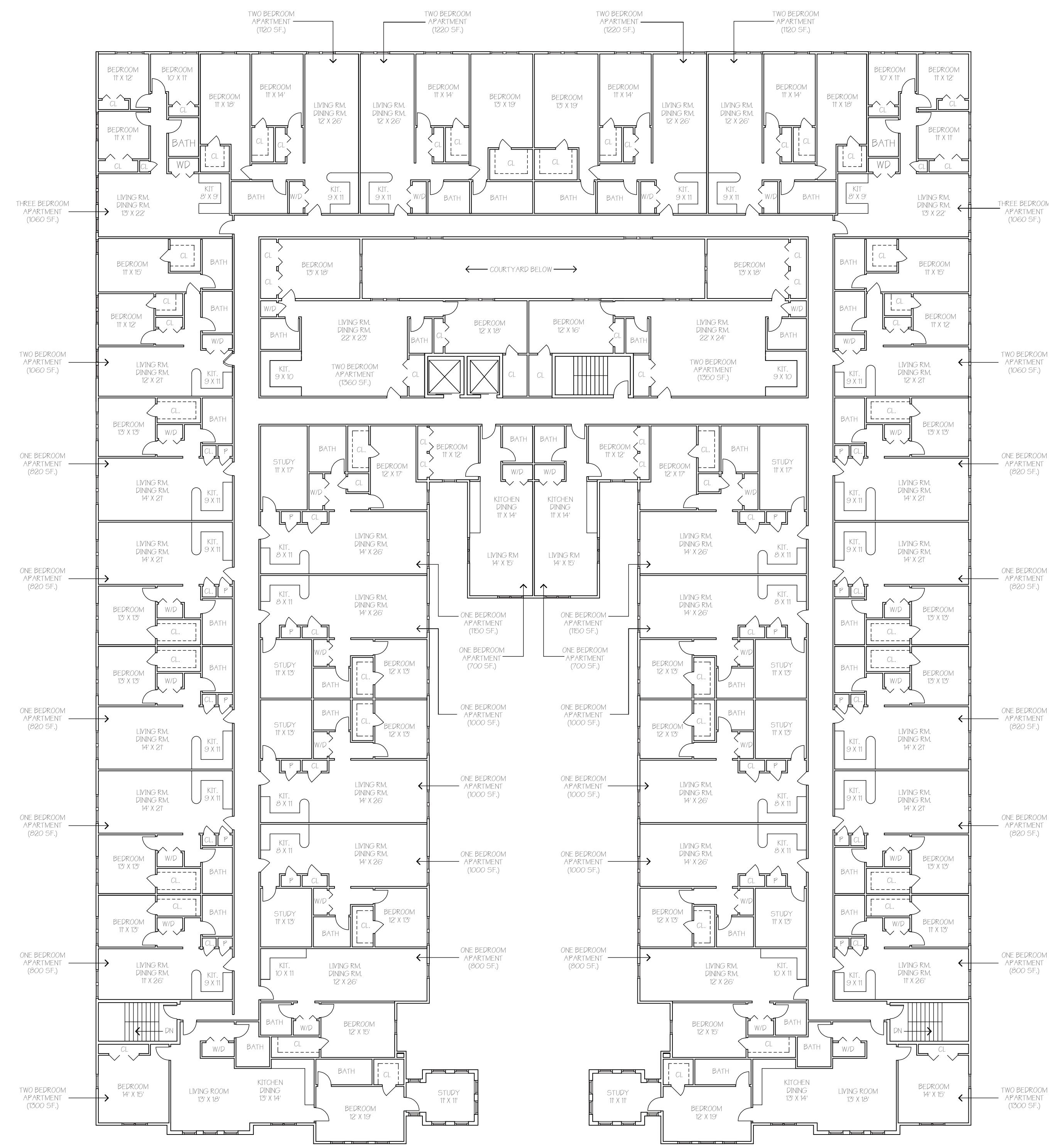


NOTES:

1. SEE FRONT ELEVATION FOR EXTENT OF TRANSPARENCY REQUIRED BY SECTION 6.12 OF THE CALDWELL REDEVELOPMENT PLAN
2. SEE 4TH FLOOR PLANS LEFT AND RIGHT SIDE ELEVATIONS FOR DIMENSIONING OF 4TH FL. STEPPACK REQUIRED BY SECTION 6.12 OF THE CALDWELL REDEVELOPMENT PLAN

SECOND FLOOR PLAN

SCALE: 1/16" = 1'-0"



NOTES:

1. SEE FRONT ELEVATION FOR EXTENT OF TRANSPARENCY REQUIRED BY SECTION 6.12 OF THE CALDWELL REDEVELOPMENT PLAN
2. SEE 4TH FLOOR PLANS LEFT AND RIGHT SIDE ELEVATIONS FOR DIMENSIONING OF 4TH FL. STEPPACK REQUIRED BY SECTION 6.12 OF THE CALDWELL REDEVELOPMENT PLAN

THIRD FLOOR PLAN

SCALE: 1/16" = 1'-0"

18 LANE AVENUE

DWG.

A-2

STEVEN CORSO, ARCHITECT, LLC
 676 BLOOMFIELD AVE., BLOOMFIELD, N.J. 07003
 TEL. (973) 566-6004, FAX. (973) 566-6154

STEVEN CORSO, ARCHITECT

AUTH. NO. AC 226
 LIC. NO. 2A0000000
 DATE: 5/28/21

PROPOSED APARTMENTS FOR
 4-18 LANE AVENUE

S & S CALDWELL VILLAGE, LLC
 CALDWELL, N.J.