

REAR ELEVATION

SCALE: 1/16" = 1'-0"



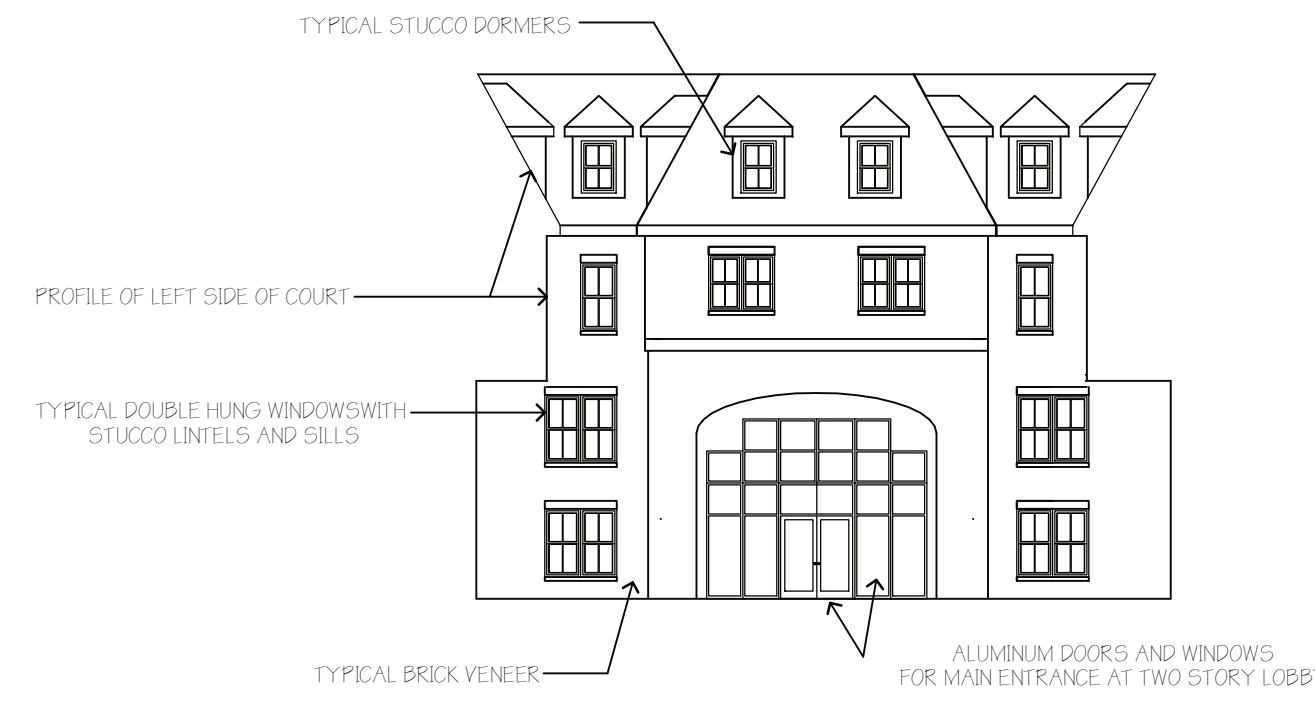
LEFT SIDE ELEVATION

SCALE: 1/16" = 1'-0"



LEFT SIDE COURT ELEVATION

SCALE: 1/16" = 1'-0"



REAR COURT ELEVATION

SCALE: 1/16" = 1'-0"



RIGHT SIDE COURT ELEVATION

SCALE: 1/16" = 1'-0"



FRONT ELEVATION

SCALE: 1/16" = 1'-0"



RIGHT SIDE ELEVATION

SCALE: 1/16" = 1'-0"