

REAR COURTYARD
FRONT FACING ELEVATION

SCALE: 1/16" = 1'-0"



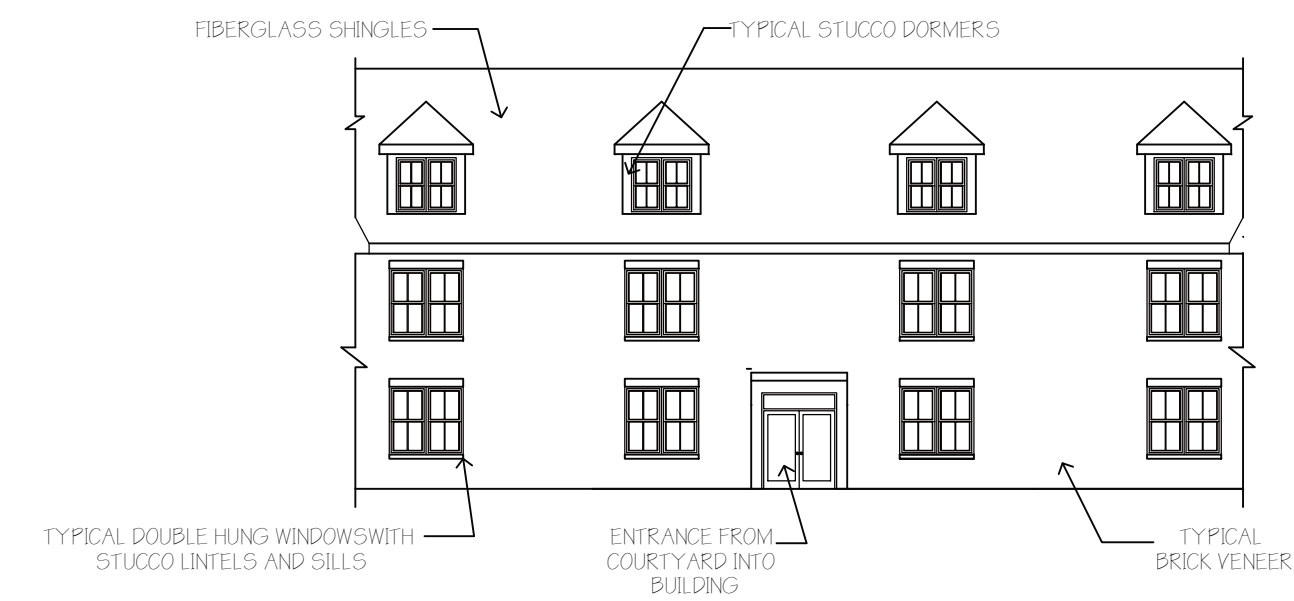
REAR COURTYARD
LEFT ELEVATION

SCALE: 1/16" = 1'-0"



REAR COURTYARD
RIGHT ELEVATION

SCALE: 1/16" = 1'-0"



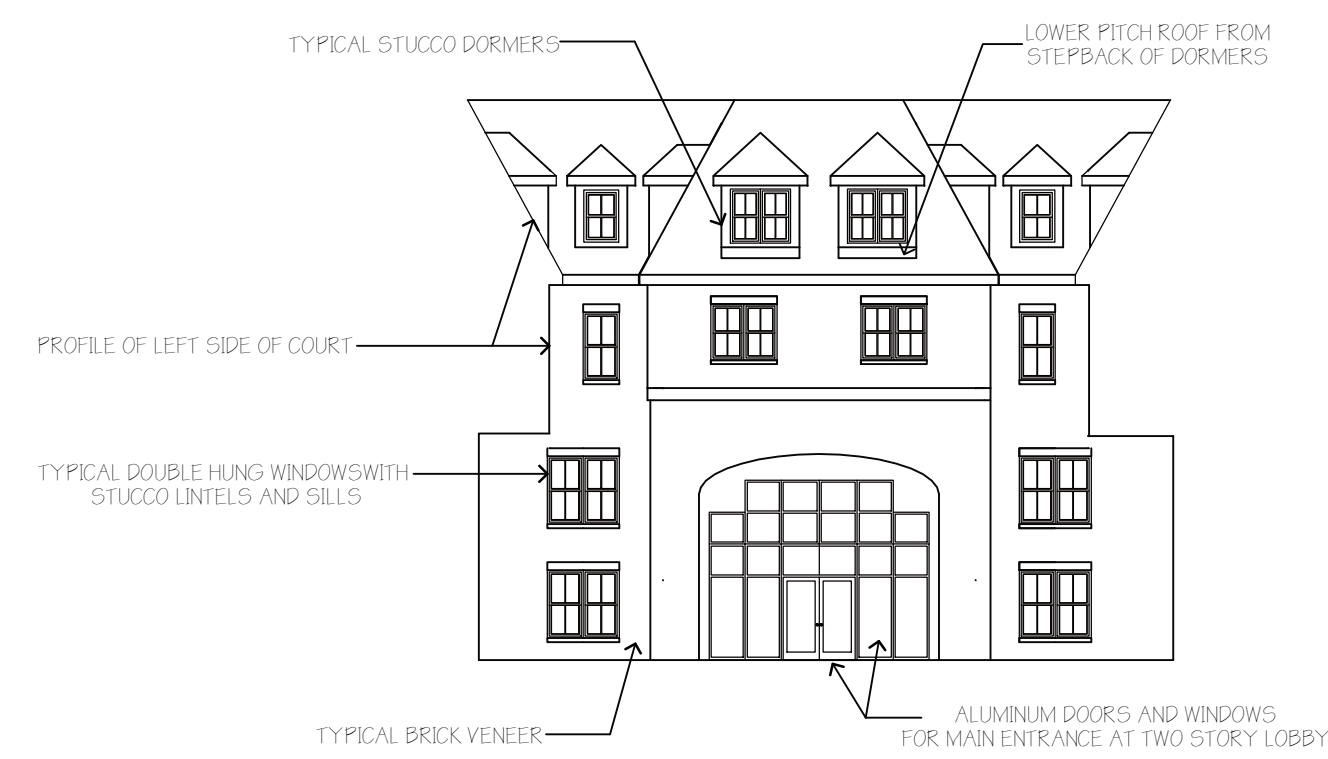
REAR COURTYARD
REAR FACING ELEVATION

SCALE: 1/16" = 1'-0"



MAIN COURTYARD
LEFT SIDE ELEVATION

SCALE: 1/16" = 1'-0"



MAIN COURTYARD
FRONT FACING ELEVATION

SCALE: 1/16" = 1'-0"



MAIN COURTYARD
RIGHT SIDE ELEVATION

SCALE: 1/16" = 1'-0"